
DIESEL GENERATOR SET

CATERPILLAR®

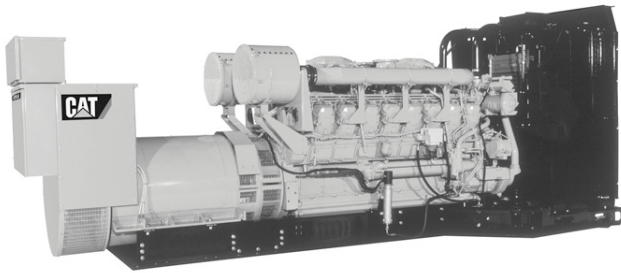


Image shown may not reflect actual package.

PRIME

**1820 e kW 2275 kVA
50 Hz 1500 rpm 400 Volts**

Caterpillar is leading the power generation marketplace with Power Solutions engineered to deliver unmatched flexibility, expandability, reliability, and cost-effectiveness.

FEATURES

FUEL/EMISSIONS STRATEGY

- Low fuel consumption

FULL RANGE OF ATTACHMENTS

- Wide range of bolt-on system expansion attachments, factory designed and tested
- Flexible packaging options for easy and cost effective installation

SINGLE-SOURCE SUPPLIER

- Fully prototype tested with certified torsional vibration analysis available

WORLDWIDE PRODUCT SUPPORT

- Caterpillar® dealers provide extensive post sale support including maintenance and repair agreements
- Caterpillar dealers have over 1,600 dealer branch stores operating in 200 countries
- The Cat® S•O•SSM program cost effectively detects internal engine component condition, even the presence of unwanted fluids and combustion by-products

CAT 3516B-HD TA DIESEL ENGINE

- Reliable, rugged, durable design
- Field-proven in thousands of applications worldwide
- Four-stroke-cycle diesel engine combines consistent performance and excellent fuel economy with minimum weight

CAT CONTROL PANELS

- Simple user friendly interface and navigation
- Scalable system to meet a wide range of customer needs
- Integrated Control System and Communications Gateway•

PRIME 1820 ekW 2275 kVA

50 Hz 1500 rpm 400 Volts



FACTORY INSTALLED STANDARD & OPTIONAL EQUIPMENT

| System | Standard | Optional |
|-------------------|--|--|
| Air Inlet | <ul style="list-style-type: none"> • Single element canister type air cleaner • Service indicator | <ul style="list-style-type: none"> • Dual element & heavy duty air cleaners (with pre-cleaners) • Air inlet adapters & shutoff |
| Cooling | <ul style="list-style-type: none"> • Radiator with guard (43°C) • Coolant drain line with valve • Fan and belt guards • Caterpillar Extended Life Coolant • Low coolant level & high temperature alarm or shutdown | <ul style="list-style-type: none"> • Radiator with 50°C ambient capability • Radiator removal • Heat exchanger and expansion tank • Radiator duct flange • Coolant level switch gauge • Jacket water heater |
| Exhaust | <ul style="list-style-type: none"> • Dry exhaust manifold • Flanged faced outlets | <ul style="list-style-type: none"> • Mufflers and Silencers • Stainless steel exhaust flex fittings • Elbows, flanges, expanders & Y adapters |
| Fuel | <ul style="list-style-type: none"> • Primary & secondary fuel filters • Fuel priming pump • Flexible fuel lines | <ul style="list-style-type: none"> • Fuel cooler • Water separator |
| Generator | <ul style="list-style-type: none"> • Class H insulation • Class F temperature (105°C prime/130°C standby) • Reactive droop • CAT digital voltage regulator (CDVR) with KVAR/PF control, 3-phase sensing • Bus bar connections • Winding temperature detectors • Anti-condensation space heaters | <ul style="list-style-type: none"> • Bearing temperature detectors • Oversize & premium generators • Cable access box • European bus bars • Circuit breakers, UL listed, 3 pole with shunt trip (low & medium voltage only) • Circuit breakers, IEC compliant, 3-pole with shunt trip (low & medium voltage only) |
| Power Termination | <ul style="list-style-type: none"> • Bus bar (NEMA and IEC mechanical lug holes) -right side standard • Top and bottom cable entry | <ul style="list-style-type: none"> • Circuit breakers, UL listed, 3 pole with shunt trip, 100% rated, choice of trip units, manual or electrically operated (low voltage only) • Circuit breakers, IEC compliant, 3 or 4 pole with shunt trip (low voltage only), choice of trip units, manual or electrically operated • Shroud cover for bottom cable entry • Power terminations can be located on the left and/or rear as an option. Also, multiple circuit breakers can be ordered (up to 2) |
| Governor | <ul style="list-style-type: none"> • ADEM™ 2 | <ul style="list-style-type: none"> • Load share module |
| Control Panels | <ul style="list-style-type: none"> • User Interface panel (UIP) - rear mount • EMCP II Genset Controller • Voltage and Speed adjust • AC&DC customer wiring area (right side) • Reactive droop • Emergency Stop Pushbutton | <ul style="list-style-type: none"> • Option for right or left mount UIP • Local & remote annunciator modules • Load share module • Discrete I/O module • Generator temperature monitoring & protection |
| Lube | <ul style="list-style-type: none"> • Lubricating oil and filter • Oil drain line with valves • Fumes disposal • Gear type lube oil pump | <ul style="list-style-type: none"> • Oil level regulator • Deep sump oil pan • Electric & air prelube pumps • Manual prelube with sump pump • Duplex oil filter |
| Mounting | <ul style="list-style-type: none"> • 330 mm (13 in) structural steel rails • Spring-type, anti-vibration mounts (shipped loose) | |
| Starting/Charging | <ul style="list-style-type: none"> • 24 volt starting motor(s) • 45 amp charging alternator • Batteries with rack and cables • Battery disconnect switch | <ul style="list-style-type: none"> • Battery chargers (5 or 10 Amp) • Oversize batteries • Ether starting aids • Heavy duty starting motors • Barring device (manual) |
| General | | <ul style="list-style-type: none"> • Crankcase explosion relief valves • Automatic transfer switches (ATS) • EU Certificate of Conformance |
| Note | Standard and optional equipment may vary for UL 2200 Listed Packages. UL 2200 Listed packages may have oversized generators with a different temperature rise and motor starting characteristics. | |

PRIME 1820 ekW 2275 kVA

50 Hz 1500 rpm 400 Volts



SPECIFICATIONS

CAT GENERATOR

Caterpillar Generator
Frame size..... 827
Excitation..... Permanent Magnet
Pitch..... 0.6667
Number of poles..... 4
Number of bearings..... 2
Number of leads..... 6
Insulation..... UL 1446 Recognized Class H with tropicalization and antiabrasion
Alignment..... Closed Coupled
Overspeed capability - % of rated..... 180
Wave form..... 003.00
Paralleling kit/Droop transformer..... Standard
Voltage regulator. 3 Phase sensing with selectable volts/Hz
Voltage regulation..... Less than +/- 1/2% (steady state)
Less than +/- 1% (no load to full load)
Telephone Influence Factor..... Less than 50
Harmonic Distortion..... Less than 5%

CAT DIESEL ENGINE

3516B-HD, V-16, 4-stroke-cycle watercooled diesel
Bore - mm..... 170.00 mm (6.69 in)
Stroke - mm..... 215.00 mm (8.46 in)
Displacement - L..... 78.08 L (4764.73 in³)
Compression ratio..... 15.5:1
Aspiration..... TA
Fuel system..... Electronic unit injection
Governor type..... Caterpillar ADEM control system

CAT EMCP CONTROL PANELS

- Warning / Shutdowns with indicating lights for:
 - Low oil pressure
 - High coolant temperature
 - Overspeed
 - Emergency stop
 - Failure to start (overcrank)
 - Auto start/stop control
 - Engine cycle crank
- True RMS AC metering, 3-phase
- Digital indications for:
 - RPM
 - Operating hours
 - Oil pressure (psi, kPa or bar)
 - Coolant temperature
 - System DC volts
- Programmable digital (4) inputs and (4) outputs
- Voltage adjustment potentiometer
- Panel lights
- MODBUS isolated data link (RS-485 half-duplex) supports 3.3 serial communication at data rate up to 115.2 kbaud (*)

***Consult your Caterpillar Dealer for Details**

PRIME 1820 ekW 2275 kVA

50 Hz 1500 rpm 400 Volts



TECHNICAL DATA

| Open Generator Set - - 1500 rpm/50 Hz/400 Volts | DM6473 | |
|---|---|---|
| Low Fuel Consumption | | |
| Coolant to aftercooler Coolant to aftercooler temp max | 30 ° C | 86 ° F |
| Generator Set Package Performance Genset Power rating @ 0.8 pf Genset Power rating with fan | 2275 kVA 1820 ekW | |
| Fuel Consumption 100% load with fan 75% load with fan 50% load with fan | 454.0 L/hr 335.8 L/hr 230.8 L/hr | 119.9 Gal/hr 88.7 Gal/hr 61.0 Gal/hr |
| Cooling System¹ Engine coolant capacity | 233.0 L | 61.6 gal |
| Inlet Air Combustion air inlet flow rate | 152.7 m ³ /min | 5392.6 cfm |
| Exhaust System Exhaust stack gas temperature Exhaust gas flow rate Exhaust flange size (internal diameter) Exhaust system backpressure (maximum allowable) | 456.4 ° C 391.3 m ³ /min 203.2 mm 6.7 kPa | 853.5 ° F 13818.6 cfm 8.0 in 26.9 in. water |
| Heat Rejection Heat rejection to coolant (total) Heat rejection to exhaust (total) Heat rejection to aftercooler Heat rejection to atmosphere from engine Heat rejection to atmosphere from generator | 585 kW 1707 kW 459 kW 133 kW 58.2 kW | 33269 Btu/min 97077 Btu/min 26103 Btu/min 7564 Btu/min 3309.8 Btu/min |
| Alternator² Motor starting capability @ 30% voltage dip Frame Temperature Rise | 4287 skVA 827 105 ° C | 189 ° F |
| Emissions (Nominal)³ NOx mg/nm ³ CO mg/nm ³ HC mg/nm ³ PM mg/nm ³ | 2799.1 mg/nm ³ 153.6 mg/nm ³ 72.5 mg/nm ³ 17.9 mg/nm ³ | |

¹ For ambient and altitude capabilities consult your Caterpillar dealer. Air flow restriction (system) is added to existing restriction from factory.

² Generator temperature rise is based on a 40° C (104° F) ambient per NEMA MG1-32.

³ Emissions data measurement procedures are consistent with those described in EPA CFR 40 Part 89, Subpart D & E and ISO8178-1 for measuring HC, CO, PM, NOx. Data shown is based on steady state operating conditions of 77°F, 28.42 in HG and number 2 diesel fuel with 35° API and LHV of 18,390 btu/lb. The nominal emissions data shown is subject to instrumentation, measurement, facility and engine to engine variations. Emissions data is based on 100% load and thus cannot be used to compare to EPA regulations which use values based on a weighted cycle.

PRIME 1820 ekW 2275 kVA

50 Hz 1500 rpm 400 Volts



RATING DEFINITIONS AND CONDITIONS

Meets or Exceeds International Specifications: AS1359, CSA, IEC60034, ISO 3046, ISO 8528, NEMA MG 1-33, UL508A, 72/23/EEC, 98/37/EC, 2004/108/EC
Prime - Output available with varying load for an unlimited time. Average power output is 70% of the prime power rating. Typical peak demand is 100% of prime rated ekW with 10% overload capability for emergency use for a maximum of 1 hour in 12. Overload operation cannot exceed 25 hours per year. Prime power in accordance with ISO 3046. Prime ambients shown indicate ambient temperature at 100% load which results in a coolant top tank temperature just below the alarm temperature.

Ratings are based on SAE J1349 standard conditions. These ratings also apply at ISO 3046 standard conditions.

Fuel rates are based on fuel oil of 35° API [16° C (60° F)] gravity having an LHV of 42 780 kJ/kg (18,390 Btu/lb) when used at 29° C (85° F) and weighing 838.9 g/liter (7.001 lbs/U.S. gal.). Additional ratings may be available for specific customer requirements, contact your Caterpillar representative for details. For information regarding Low Sulfur fuel and Biodiesel capability, please consult your Caterpillar dealer.

PRIME 1820 ekW 2275 kVA

50 Hz 1500 rpm 400 Volts



DIMENSIONS

| Package Dimensions | | |
|--------------------|-----------|-----------|
| Length | 6766.7 mm | 266.4 in |
| Width | 2204.5 mm | 86.79 in |
| Height | 3014.0 mm | 118.66 in |
| Weight | 14 833 kg | 32,701 lb |

NOTE: For reference only - do not use for installation design. Please contact your local dealer for exact weight and dimensions. (General Dimension Drawing #2065998).

Performance No.: DM6473

Feature Code: 516DE83

Gen. Arr. Number: 1662720

Source: European Sourced

August 04 2008

12770391

www.CAT-ElectricPower.com

© 2008 Caterpillar
All rights reserved.

Materials and specifications are subject to change without notice.
The International System of Units (SI) is used in this publication.

CAT, CATERPILLAR, SAFETY.CAT.COM their respective logos, "Caterpillar Yellow," and the POWER EDGE trade dress, as well as corporate and product identity used herein, are trademarks of Caterpillar and may not be used without permission.